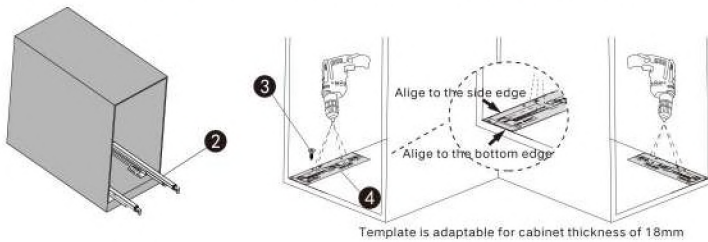
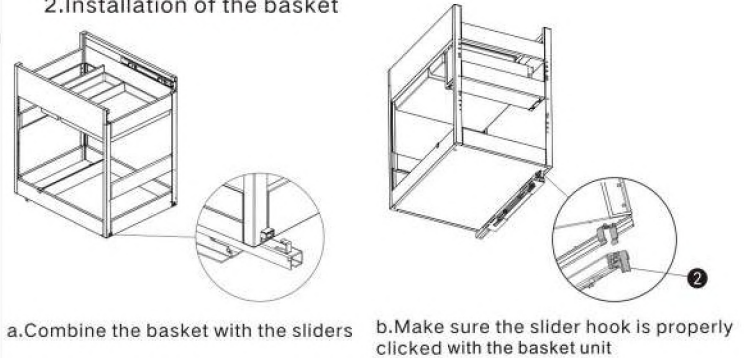


	300mm cabinet	400mm cabinet	450mm cabinet
Product Size(mm)	460x264x540	460x364x540	460x414x540
For Cabinet size(mm)	500x300x615	500x400x615	500x450x615

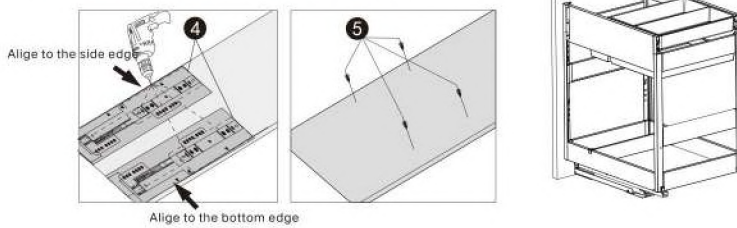
1. Install the rails with 12 pcs of ST3.5*16mm ST Screws



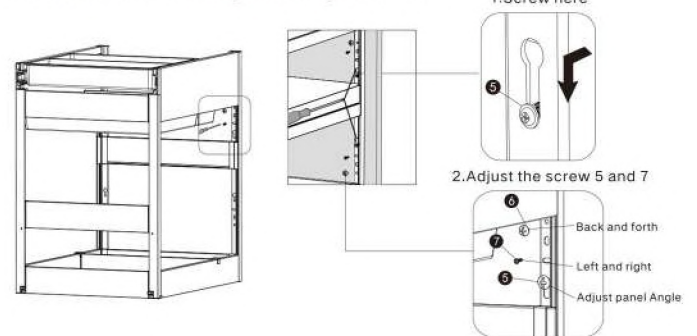
2. Installation of the basket



3. Installation of the door panel



4. Instruction of the panel adjustment



5. Installation complete

