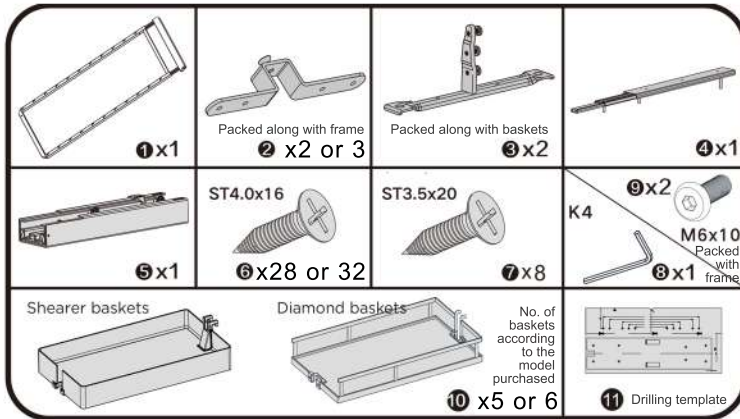
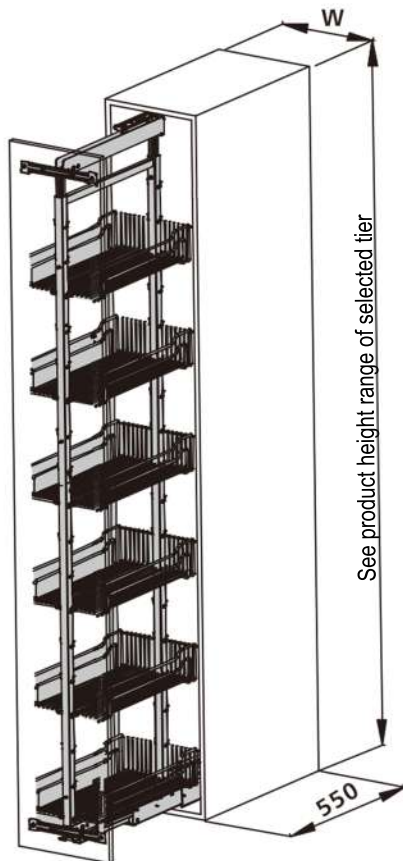


Parts List



This installation manual is for the following cabinet and height models:

CABINET	WIDTHxDEPTHxHEIGHT	NO. OF BASKETS
300mm	250x510x(1659-2059)mm	5
300mm	250x510x(1959-2359)mm	6
400mm	350x510x(1659-2059)mm	5
400mm	350x510x(1959-2359)mm	6



FEATURES

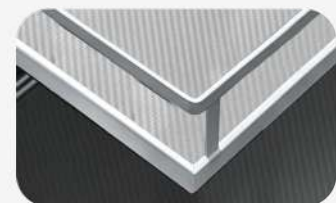
- Two styles of tray design*
- Soft close heavy duty runner
- Two widths to suit standard cabinets:
300mm (268mm internal)
400mm (368mm internal)
- Adjustable frame heights:
High: 1659-2059mm
Very High: 1959-2359mm
- Adjustable tray positions
- Up to 8kg load per tray
- Full extension display

*TRAY SHELF STYLES

Note: Shelf style in diagram may differ from your model

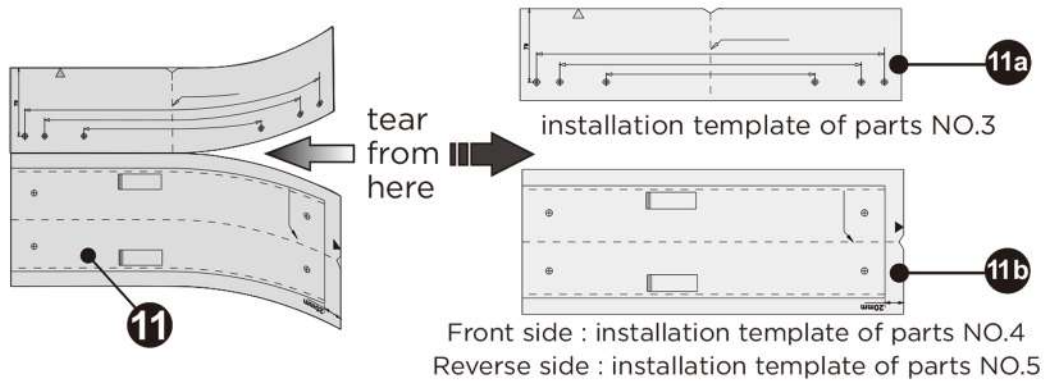


Shearer PRO Style
Aerospace-grade aluminium with non-slip textured MDF base



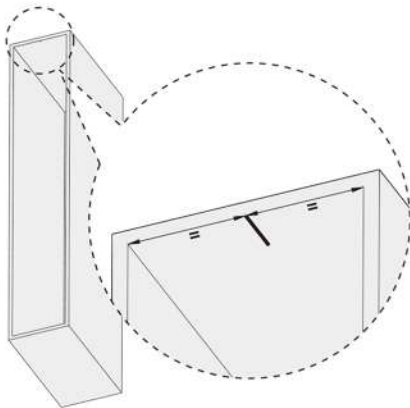
Diamond PRO Style
Nano-coated grey railings with non-slip textured MDF base

STEP 1. Drilling template

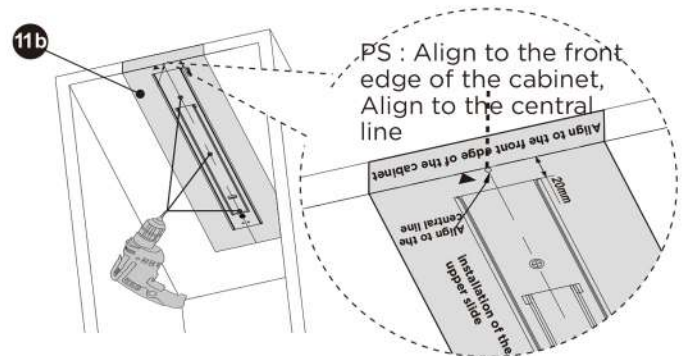


STEP 2. Installation of top runner

2.1. Draw the central line on the cabinet ceiling.

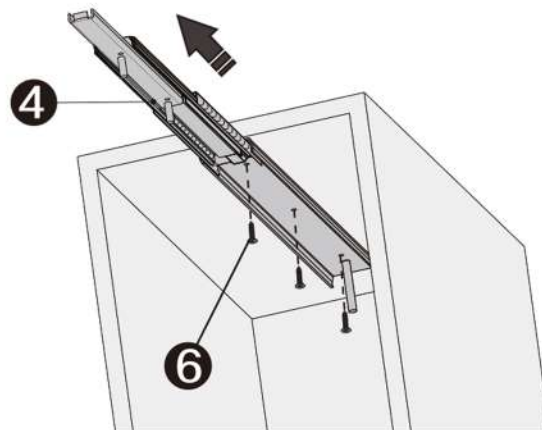


2.2. Drill 3x $\varnothing 2.5\text{mm}$ holes according to the 11 template.



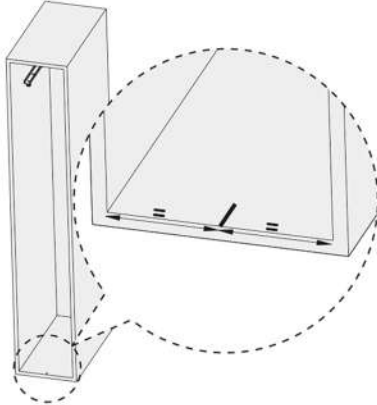
Note: We recommend gluing the drilling template securely to the cabinet ceiling first before drilling the holes

2.3. Fasten the 4 top runner with 6 3pcs of ST4.0*16 screws.

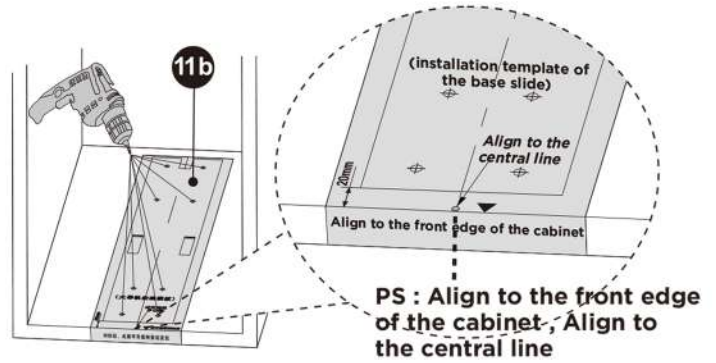


STEP 3. Installation of bottom runner

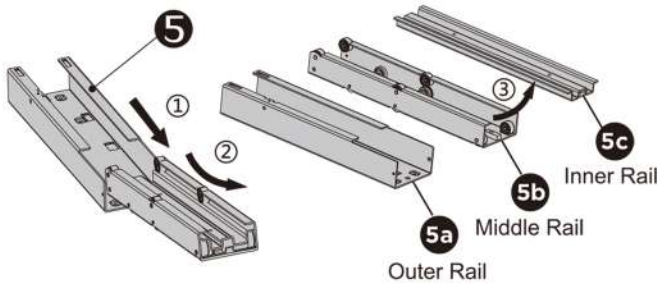
3.1. Draw the central line on the cabinet base.



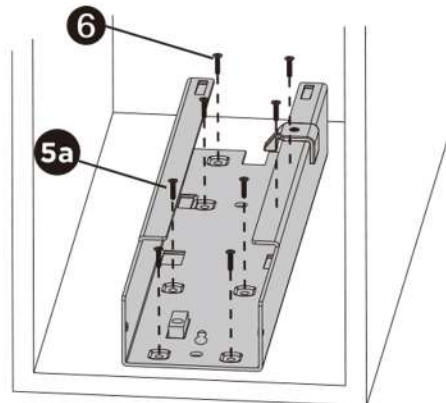
3.2. Drill 8x \varnothing 2.5mm holes according to the **11** template.



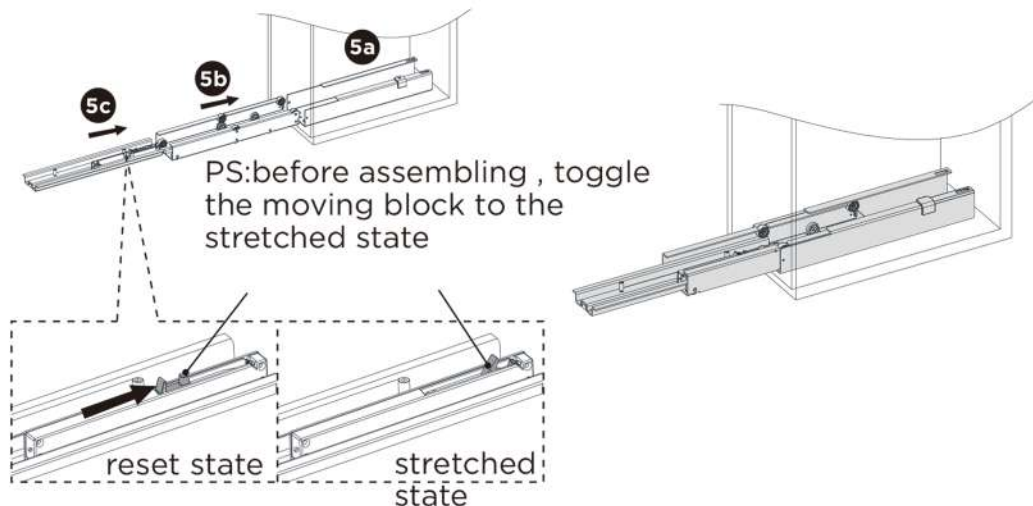
3.3. Pull out the **5** runner until it separates into three individual parts.



3.4. Fasten the outer rail with **6** 8pcs of ST4.0*16 screws.



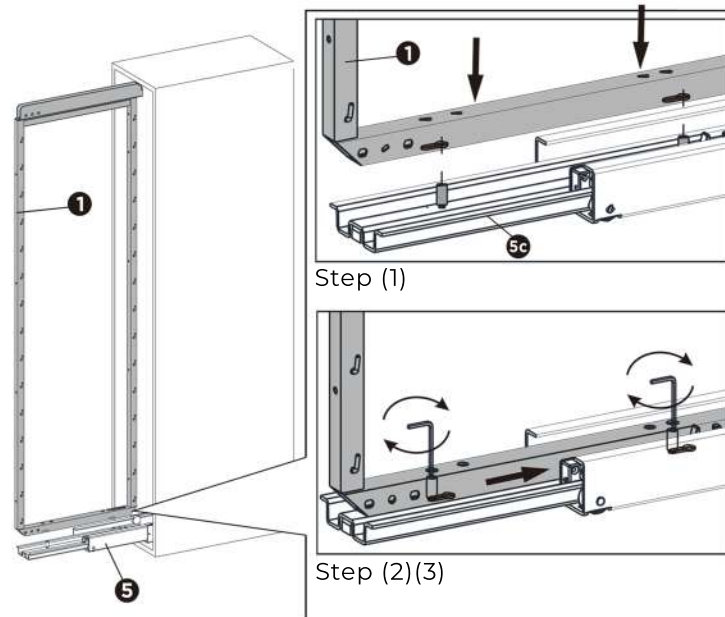
3.5. Re-assemble the three parts of the runner together.



STEP 4. Installation and adjustment of the frame

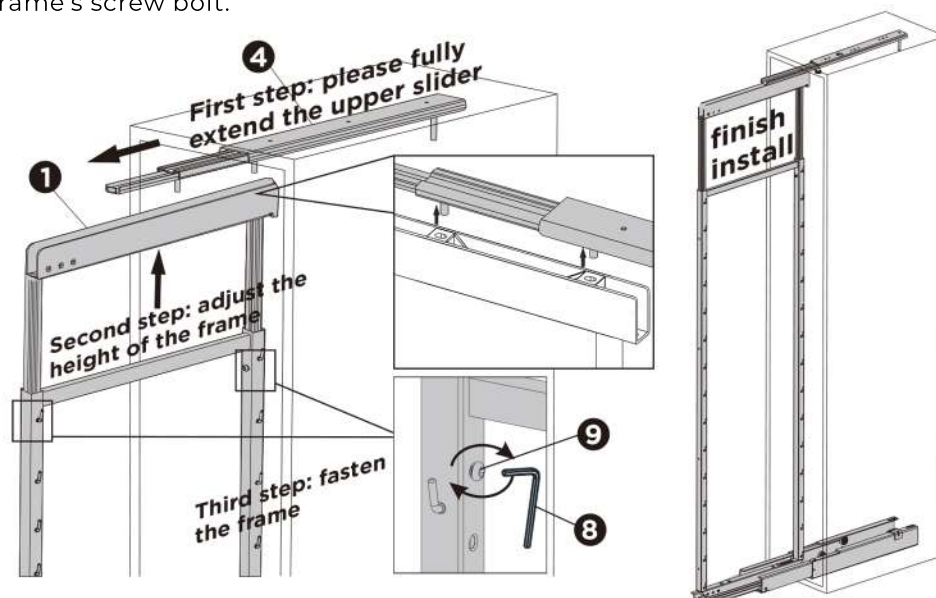
4.1. Combine the ❶ frame with the ❺ bottom runner.

- (1) Insert the screw holes at the bottom of the main frame downward, aligning with the runner's screws.
- (2) Push the main frame inward so that the screws are locked in the screw holes.
- (3) Use the provided wrench to lock the screws.
- (4) After the installation is finished, pull the runner back and forth to ensure it is working properly.



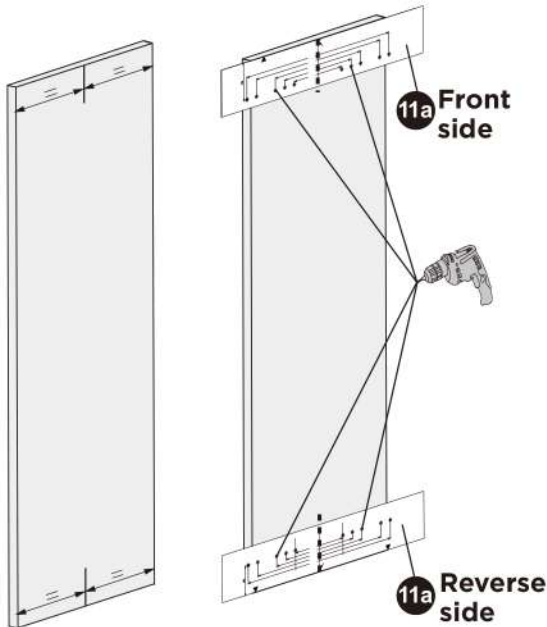
4.3. Connect the ❶ frame to the ❹ top runner.

- (1) Fully extend the top runner.
- (2) Loosen the frame's screw bolt and adjust the height. Make sure that the roller of the top runner matched with the frame.
- (3) Fasten the frame's screw bolt.

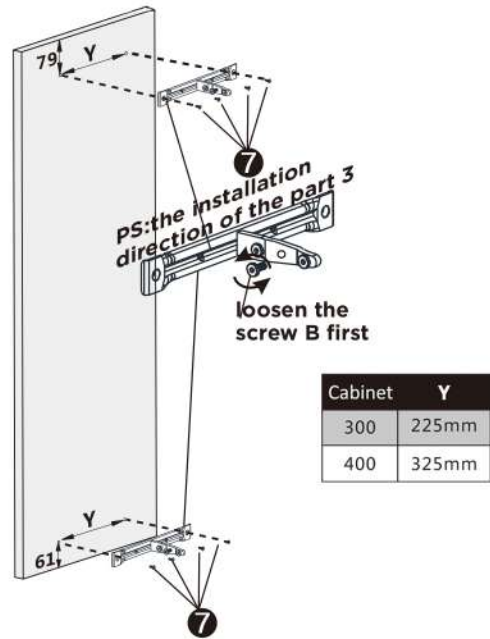


STEP 5. Installation of door panel

5.1. Draw and drill two holes on each end of the door panel.

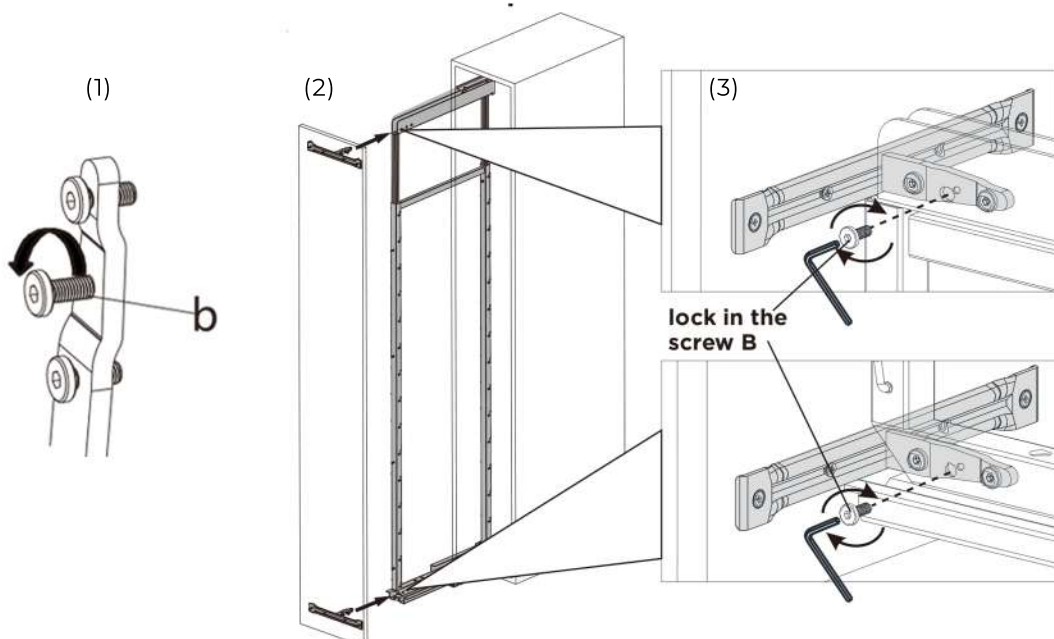


5.2. Install the **3** T-shape brackets using 8pcs of **7** ST3.5*20 screws.



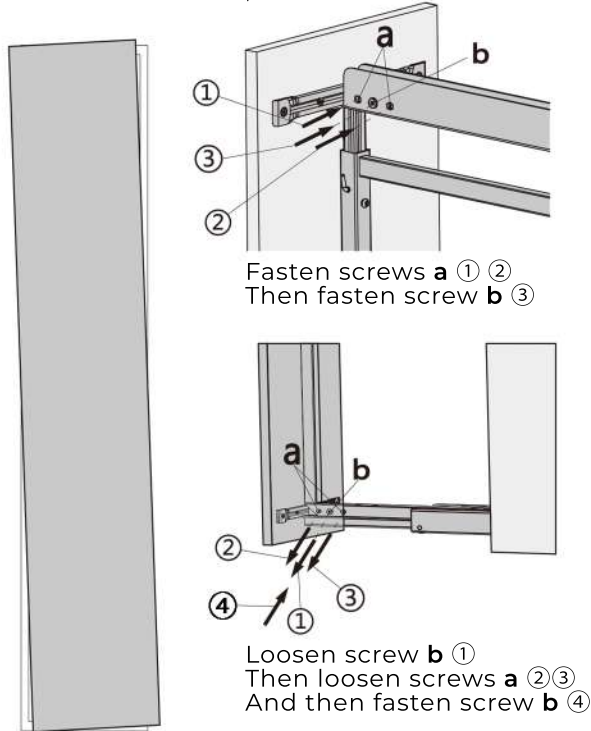
5.3. Attach the **3** T-shaped brackets to the **1** frame.

- (1) Loosen screw **b** on each of the T brackets.
- (2) Connect the frame with both upper and lower T brackets.
- (3) Secure the frame by fastening screw **b**.

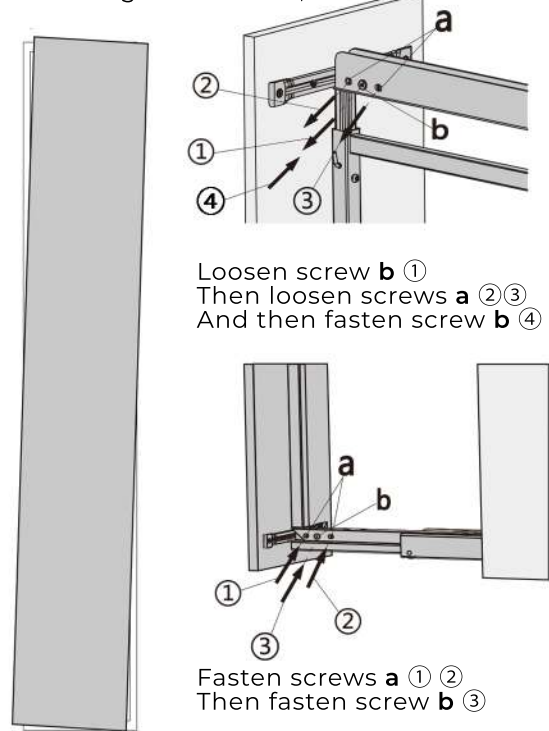


STEP 6. Adjustment of door panel

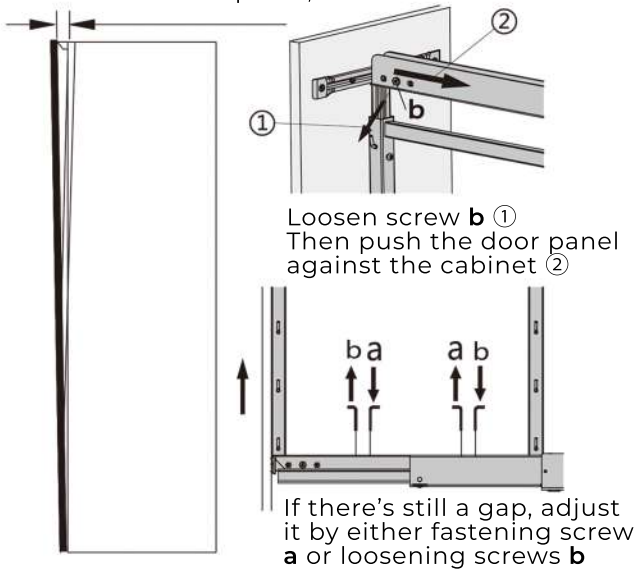
If the door panel is leaning to the left hand side,



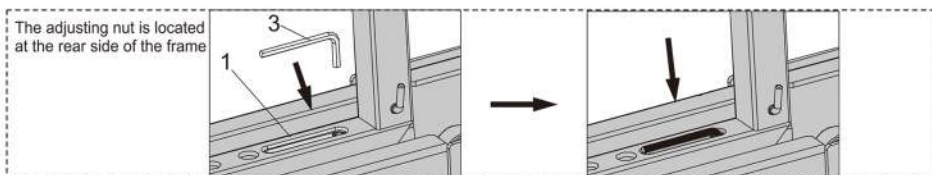
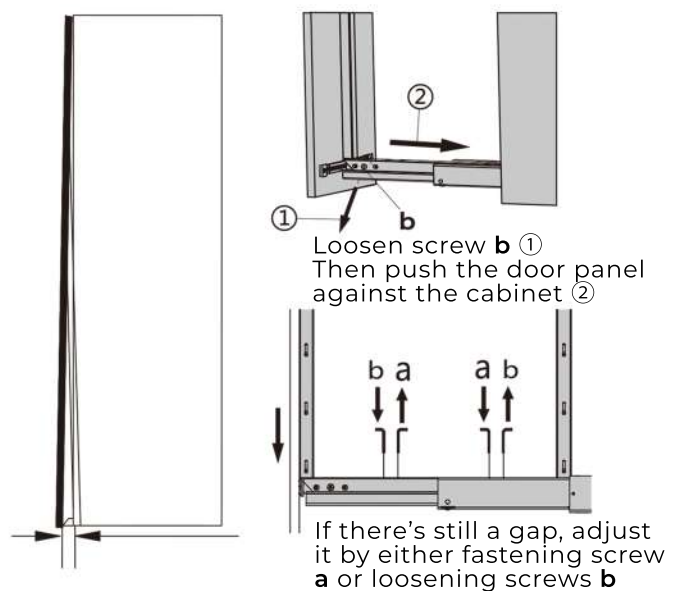
If the door panel is leaning to the right hand side,



If there is a gap at the upper side of the door panel,



If there is a gap at the lower side of the door panel,



▶▶ STEP 7. Installation of U-shaped brackets and baskets

- 7.1. Screw and fasten all necessary screws and **2** U-shaped brackets. All provided U-shaped brackets must be installed to ensure safety and stability.
- 7.2. Place the **10** baskets according to the actual height of the frame. Each basket can be installed according to the desired placement and to accommodate pantry items of different heights.

